

# **RATE LIMITER**

Type B12-17

**User Guide**

Continuous development may necessitate  
changes in these details without notice

Document Ref: UDB12-17.vp Rev 0



**PROCESS MEASUREMENT, CONTROL & DISPLAY INSTRUMENTATION**

**STROUD INSTRUMENTS LTD**

36-40 Slad Road, Stroud, Gloucestershire GL5 1QW England

Tel: +44 (0)1453 765433 Fax: +44 (0)1453 764256

sales@sil.co.uk <http://www.sil.co.uk>



## **WARNING!**

**It is important that this guide is read and fully understood before attempting installation or commissioning of the instrument. Instructions appearing in this document, and current safety legislation, must be observed to ensure personal safety and to prevent damage to the instrument or equipment connected to it.**

**The instrument should be installed, commissioned and operated *only* by suitably qualified and authorised personnel.**

## **Safety and EMC information**

Safety: EN61010 -1

Immunity: EN50082-1

Emissions: EN50081-1

CE certified



**The specifications for the instrument must not be exceeded. If the instrument is used in a manner not specified, the protection provided by the instrument may be compromised.**



**The instrument must be installed in an enclosure that provides adequate protection against electric shock.**



**Ensure that power to the instrument is switched off and signal wiring isolated from hazardous voltages before carrying out installation or maintenance.**



**The instrument is designed for installation in a clean, dry environment (Pollution degree 1).**



**Stroud Instruments Ltd strongly recommends that repairs and re-calibration work are done on a return to factory basis in order that our quality standards, product specifications and safety precautions are not compromised.**



**The instrument is double insulated**

**Note: Clean with a moist cloth - USE NO SOLVENTS.**

## Installation



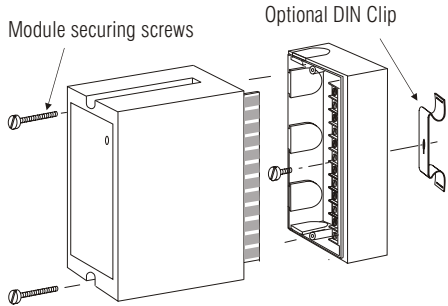
**WARNING:** Installation should be conducted by appropriately skilled and authorised personnel only.



**WARNING:** Ensure that power to the instrument is switched off and signal wiring isolated from hazardous voltages before carrying out installation.



**WARNING:** The instrument must be installed in an enclosure that provides adequate protection against electric shock.



## Location

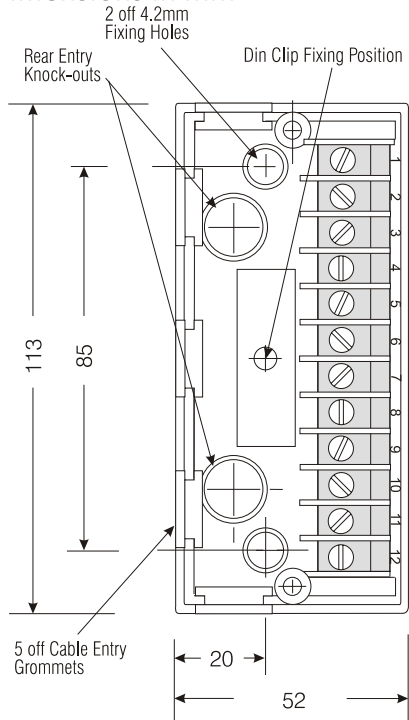
- The instrument is designed for installation in a clean, dry environment
- Do not install near to switch gear, motor controllers or other sources of strong magnetic fields.
- Avoid exposure to direct sunlight and ensure the ambient temperature inside the enclosure that the unit is mounted in will not exceed our specification.

## Fixing

B12 Series Modules are designed to be fitted to any flat dry surface using two 4mm screws. Alternatively, by fitting an optional DIN clip, they may be clipped to a rail conforming to BS5584:1978, EN50 022, DIN46277-3.

Grommets are provided on three sides of the base section and there are two rear entry knock outs in the bottom.

## Dimensions in mm



Depth of unit 106mm

## Wiring and connections

- Segregate power supply and signal wiring.
- Use screened cable for all signal wiring with the screen earthed at instrument end only.
- All connections should be made using ferrules.

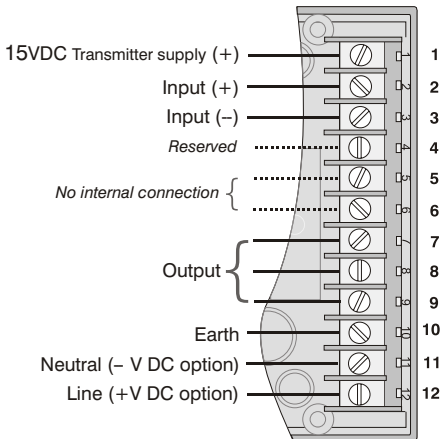
Screw terminals are provided - wire capacity 2 x 1.5mm<sup>2</sup>

## Access to Terminals



**WARNING:** Ensure that power to the instrument is switched off and signal wiring isolated from hazardous voltages

Loosen the two module securing screws. Gently pull away the top section of the module from its base to expose the fixing points and wiring terminals. To refit the module, align the module edge connectors with the socket in the base and carefully press home. **NB** do not over tighten the module securing screws.



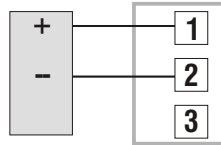
## Input connections

Inputs are factory configured for one only of the following types - see data label on enclosure for details of the type fitted.

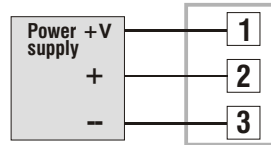
The input type is not user configurable.

A transducer supply of 15VDC @20mA max. is fitted as standard to all versions.

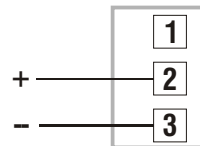
### Two-wire transmitter



### Three-wire transmitter



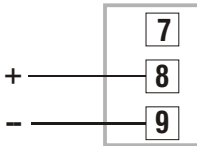
### Current and voltage



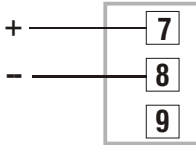
## Output connections

Outputs are calibrated to order and are not user configurable - see data label on enclosure for calibration details. A change in the type of output will require a return to factory for re-configuration.

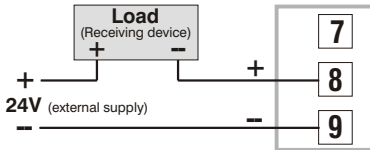
### Voltage



### Current



### Current sink



## Power supply connections

This instrument is supplied in *one* of two power supply versions.

1. AC mains supply either: 110V, 220V or 230V  $\pm$  50/60Hz, 5VA.
2. Low voltage supply: 11-32VDC 4W / 12-24VAC.



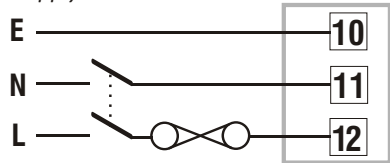
**WARNING:** Check that the supply voltage on the data label (on side of instrument) is suitable for the application.



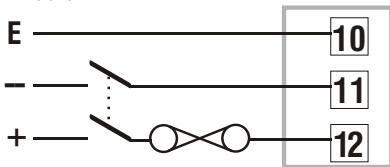
**WARNING:** Ferrules must be used for AC mains power wiring

Power supply wiring to the instrument should be protected by a suitable fuse and double pole switch - see below. The switch should be clearly marked as the isolating switch for the instrument.

### AC Supply



### DC supply



## Fuse replacement and power supply adjustments



**WARNING:** Switch off all supplies and isolate signal and other wiring from dangerous voltages before proceeding.

Please note: the operating supply voltage on DC and 24V AC powered versions cannot be changed by the user.

Remove plug-in module as described in Access to Terminals in the Installation section.

The plate with the terminal connections label can now be removed by easing apart the longer sides of the module to release the interlocking tongue and groove.

Note the location of the printed circuit board which must be replaced in the same position. Slide out the board.

## Changing AC supply voltage

Mains powered units can be adapted for operation on 110V, 220V or 230V supplies.



**WARNING: Links for 110VAC and 220VAC must be insulated with silicon rubber sleeving.**

Fig 1 provides details of the required link settings which are effected by soldered tinned copper wire links.

## Fuse replacement

The fuse holder is located at the edge of the circuit board adjacent to the mains transformer or low voltage power unit.

**Fuse size:** 20mm x 5mm dia.

**Fuse ratings:**

*AC supply* - 100mA Quick Blow

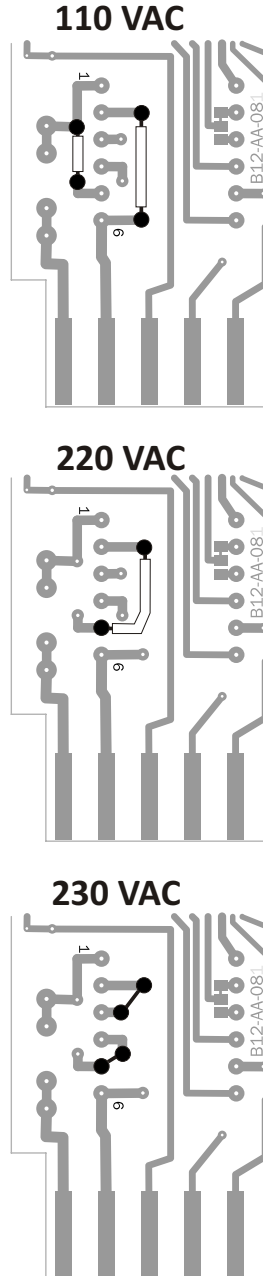
*DC supply* - 250mA Anti-surge

## Re-assembly

Re-check your link selections.

Replace the printed circuit board into the case ensuring that it is located in the slot under the LED indicator window. Replace the bottom plate by first engaging the side with the two tongues into the slots in the case and then press the plate home to engage the side with the single tongue. Plug the reassembled module into the base section and secure with the two captive screws provided - *do not overtighten*.

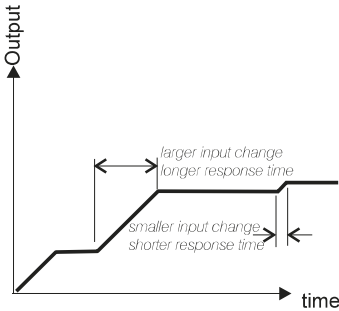
Fig. 1 AC mains supply links



# Output characteristics

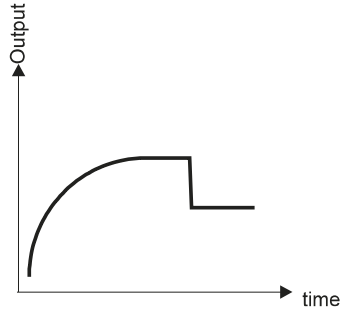
The output characteristics of standard versions of the Rate Limiter are shown below. See the data label on the side of the enclosure for the type supplied.

## B12-17/1 Rate Limiter



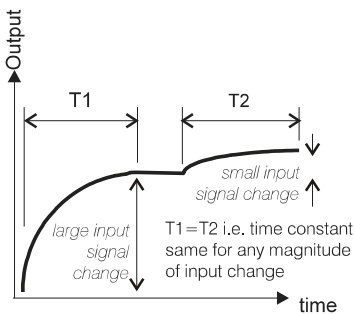
The response curve is a linear ramp with a fixed rate of change. The effect on the output is a response time proportional to the magnitude of input signal change.

## B12-17/0 Slow Up/Fast Down Response



For rising input signals the response curve is the same as the B12-17/2. However, with a falling input signal level the output signal follows virtually instantly.

## B12-17/2 Slow Up/Slow Down Response



The response curve is exponential and the time constant for the output to reach a steady state value is the same for any magnitude of change in input signal.

# Specification

## Notes:

- 1 Input and output ranges are factory calibrated for one type of signal and not user configurable..

## Inputs

Current from 0-1mA to 0-30mA and Voltage from 0-1V to 0-250V. Typical inputs: 0-10mA (100R), 0-20mA (50R), 4-20 mA (62R), 0-5V, 1-5V, 0-10V, 2-10V (>200k) *Input impedances shown in brackets.*

## Input Signal No-break Loop Facility

mA input signal loops are maintained when the unit is unplugged from the base section.

## Input Overrange Protection

Voltage Inputs: 250 volts RMS or DC, Current Inputs: 50mA

## Outputs

0-10mA (2000R), 0-20 mA (1000R), 4-20 mA (1000R)

**High impedance output drive options:** 0-10mA (5000R), 0-20 mA (2500R), 4-20 mA (2500R) *Maximum output impedances in ohms shown in brackets.*

0-5V, 1-5V, 0-10V, 2-10V (500R minimum)  
Current sink 4-20mA @ 50 volts max.

## Transmitter Excitation Supply

15VDC @ 20mA maximum

## Response Time

Can be manufactured for 0-60 seconds up to 0-120 seconds

## Isolation

The input and output are not isolated from each other, but are isolated from the power supply.

## Calibrated Accuracy

Set at 100% to be within  $\pm 0.2\%$  FSD.

## Linearity Error

$\pm 0.1\%$  FSD

## Output Ripple

0.2% RMS of FSD

## Load Resistance Effect

0.001% of span / 100 ohm change

## Stability

Over 24 hours  $\pm 0.1\%$  FSD,  
Over 1 year  $\pm 0.25\%$  FSD

## Common Mode Rejection

<0.2% error for 250V RMS 50/60 Hz, or 400V DC, common mode signals.

## Temperature Coefficients

Zero:  $\pm 0.02\%$  span / °C, Span:  $\pm 0.02\%$  span / °C

## Environmental

Temperature: operating -10 to +60°C,  
storage -20 to +70°C

Humidity: 0 – 95% RH non-condensing

## Power Supply

**AC Supply:** 110, 220 or 230V  $\pm 10\%$  50/60Hz 5VA

Fuse: 100mA quick-blow (internal)

**Low voltage:** 11-32VDC 4 W / 12-24VAC

Fuse: 250mA anti-surge (internal)

## Supply Voltage Rejection

Span change: <0.02% span / % supply change.

## Mechanical

Weight: approx. 0.5kg

Enclosure: Fire retardant materials -  
PPO base, ABS cover

Screw terminal wire capacity: 2 x 1.5mm<sup>2</sup>

Continuous development may necessitate changes in these details without notice.